



EXPLORING FOR THE

NEXT GENERATION OF ANDEAN COPPER GIANTS

MAY 2026



DISCLAIMER

Certain statements contained in this presentation constitute “forward-looking statements” within the meaning of applicable Canadian securities legislation. Such forward-looking statements herein may include but are not limited to: interpretations of exploration results; strategic plans and expectations for the development of the Company’s properties; costs, financial information including budgets, metal price assumptions, cash flow forecasts, internal rate of return, projected capital and operating costs; technical results and assumptions including metal recoveries, mine life and production rates; and intended use of proceeds.

Such forward-looking statements and related information are based on a number of assumptions which may prove to be incorrect. Assumptions have been made regarding, among other things: conditions in general economic and financial markets; availability to realize historical technical data and develop and finance the projects; accuracy of the interpretations and assumptions used; availability of mining or exploration equipment; availability of skilled labour; timing and amount of capital expenditures; laboratory and other related services are available and perform as contracted; effects of regulation by governmental agencies; and delays caused by the Covid-19 pandemic and any related local or international protocols and travel restrictions.

The actual results could differ materially from those anticipated in these forward-looking statements as a result of the risk factors set forth below and elsewhere in this presentation. Risk factors may include, but are not limited to: the availability of funds; the timing and content of work programs; results of exploration activities and the development of mineral properties; the interpretations of exploration results including drilling data; the uncertainties of resource estimations; project cost overruns or unanticipated costs and expenses; uncertainty as to actual capital costs, operating costs, production and economic returns; and uncertainty that development will result in a profitable mining operation at any of the Company’s projects; reliance on historical NI43-101 technical report/s; fluctuations in commodity prices and currency exchange rates; political and economic risks; and general market and industry conditions.

Forward-looking statements are based on the expectations and opinions of the Company’s management on the date the statements are made. The assumptions used in the preparation of such statements, although considered reasonable at the time of preparation, may prove to be imprecise and, as such, readers are cautioned not to place undue reliance on these forward-looking statements, which speak only as of the date the statements were made. The Company undertakes no obligation to update or revise any forward-looking statements included in this presentation if these beliefs, estimates and opinions or other circumstances should change, except as otherwise required by applicable law. Certain information in this presentation has been provided to the Company by third parties. Andina Copper Corporation shall not be deemed to make or have made any representation or warranty as to the accuracy or completeness of any such information furnished hereunder.

No securities commission or regulatory authority has reviewed the accuracy or adequacy of the information presented.

The reader is cautioned that when reference to any mineral deposit or historic or existing mining district is made in this presentation, this is to help place the properties into geologic context and is for reference purposes only. There is no evidence to date that similar mineral resources occur on Andina Copper’s properties.

QUALIFIED PERSON. *Francisco Montes, a consultant of Andina Copper Corp and a “qualified person” (“QP”) within the definition of that term in National Instrument 43-101, Standards of Disclosure for Mineral Projects, has verified the scientific and technical information that forms the basis for this news release. Francisco Montes is a member of Australian Institute of Geoscientists (MAIG #4160).*

ACTIVELY EXPLORING ACROSS SOUTH AMERICA



TWO NEW PORPHYRY COPPER DISCOVERIES

Along the Andean Porphyry Belt (San Juan, ARG and Chocó, COL)

A COMPELLING UNDRILLED COPPER - GOLD TARGET

Antofagasta, Chile

PROVEN TERRAIN FOR BIG COPPER DEPOSITS

World's most productive copper belt

SIGNIFICANT MAJOR COMPANY PRESENCE

Hotbed of corporate and M&A activity



Entry Level Valuation



Potential for Multiple Large Deposits



Year-Round Exploration & Evaluation Drilling



Experienced Board, Management & Advisory Team

BOARD, MANAGEMENT AND ADVISORY TEAM

HIGHLY EXPERIENCED LEADERSHIP TEAM

BOARD OF DIRECTORS



Tony Manini
Chairman



Joseph van den Elsen
President & CEO



Bryce Roxburgh
Non-Executive Director



Paola Brewster
Non-Executive Director

BOARD, MANAGEMENT AND ADVISORY TEAM

KEY MANAGEMENT AND ADVISORS



Gustavo Zulliger
*Principal Consulting
Geologist*



Jordan Webster
*VP – Technical
Communications*



Bill Tsang
CFO



Stephen McIntosh
Strategic Advisor



Dan Earle
Strategic Advisor

*Decades of experience advancing porphyry copper deposits across South America.
Combination of technical capability and a proven track record of execution.*

CAPITAL STRUCTURE

ANDINA COPPER (TSXV:ANDC)

Shares

Market Cap (@ \$1.17)

Issued & Outstanding

271,338,113

~\$315 m

Warrants – average exercise price \$0.37

34,027,263

Stock Options – average exercise price \$0.43

17,048,432

Cash Balance

~\$25,000,000

Enterprise Value ~\$290 m

Fully Diluted

322,413,808

Major Shareholders

Shares

%

Tony Manini & associated entities (**Chairman**)

14,510,545

5.4%

Joseph van den Elsen (**President & CEO**)

6,600,400

2.5%

Bryce Roxburgh (**Non-Executive Director**)

5,951,713

2.4%



COBRASCO PORPHYRY Cu-Mo

Chocó, COLOMBIA

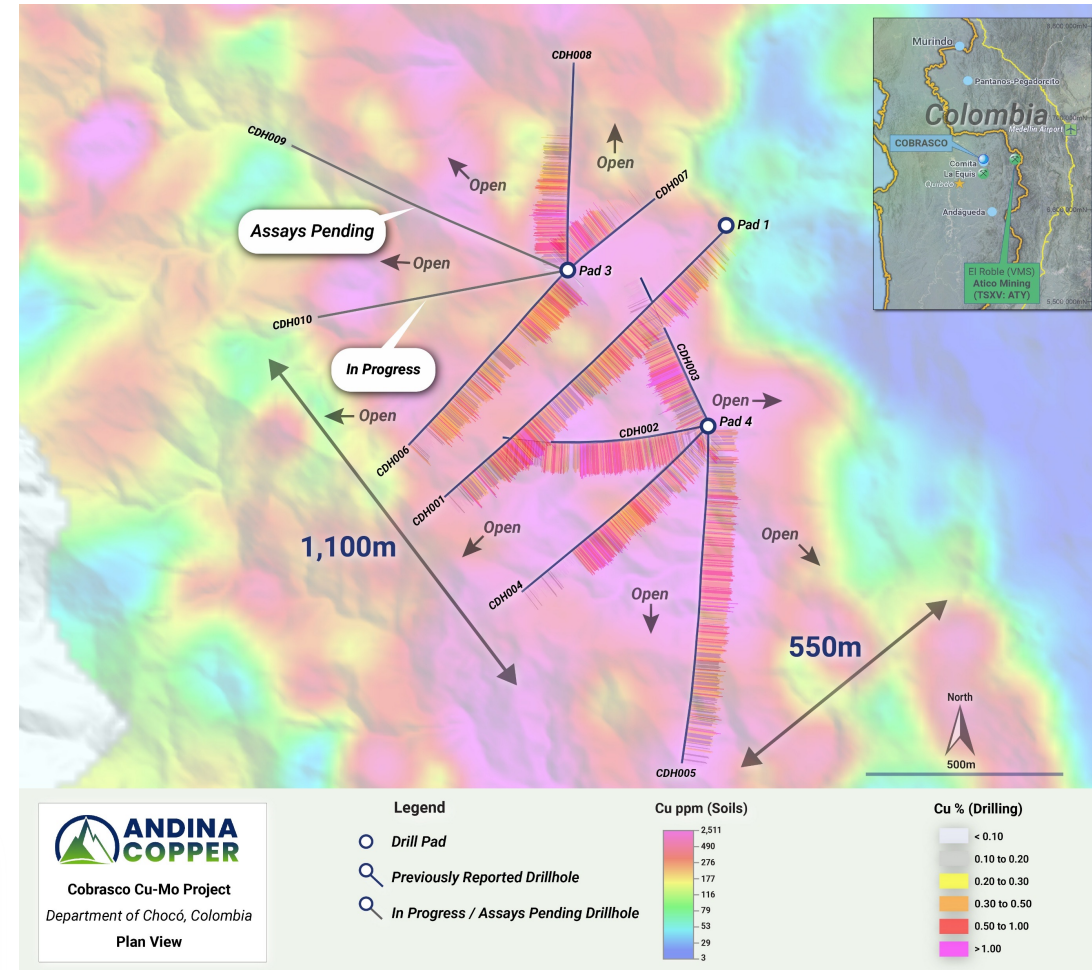


A MAJOR NEW PORPHYRY COPPER DISTRICT – CURRENTLY DRILLING

SIGNIFICANT Cu-Mo INTERCEPTS FROM FIRST 8 DRILL HOLES:

- **CDH001:** 808m @ 0.42% Cu, 7 ppm Mo (from 184m), incl. **82m @ 0.90% Cu, 199ppm Mo (from 774m)**
- **CDH002:** 754m @ 0.46% Cu, 76ppm Mo (from 152m), incl. **172m @ 0.74% Cu, 78ppm Mo (from 474m)**
- **CDH003:** 352m @ 0.68% Cu, 112ppm Mo (from 144m), incl. **118m @ 1.17% Cu, 193ppm Mo (from 246m)**
- **CDH004:** 620m @ 0.46% Cu, 79ppm Mo (from 62m), incl. **146m @ 0.76% Cu, 107ppm Mo (from 536m)**
- **CDH005:** 454m @ 0.43% Cu, 66ppm Mo (from 214m), incl. **198m @ 0.51% Cu, 77ppm Mo (from 338m)**
- **CDH006:** 486m @ 0.42% Cu, 51ppm Mo, (from 38m), incl. **232m @ 0.68% Cu 75ppm Mo (from 38m)**
- **CDH007:** 292m @ 0.48% Cu, 62ppm Mo (from 44m),
- **CDH008:** 272m @ 0.50% Cu, 75ppm Mo (from 52m), incl. **152m @ 0.67% Cu, 68ppm Mo (from 54m)**

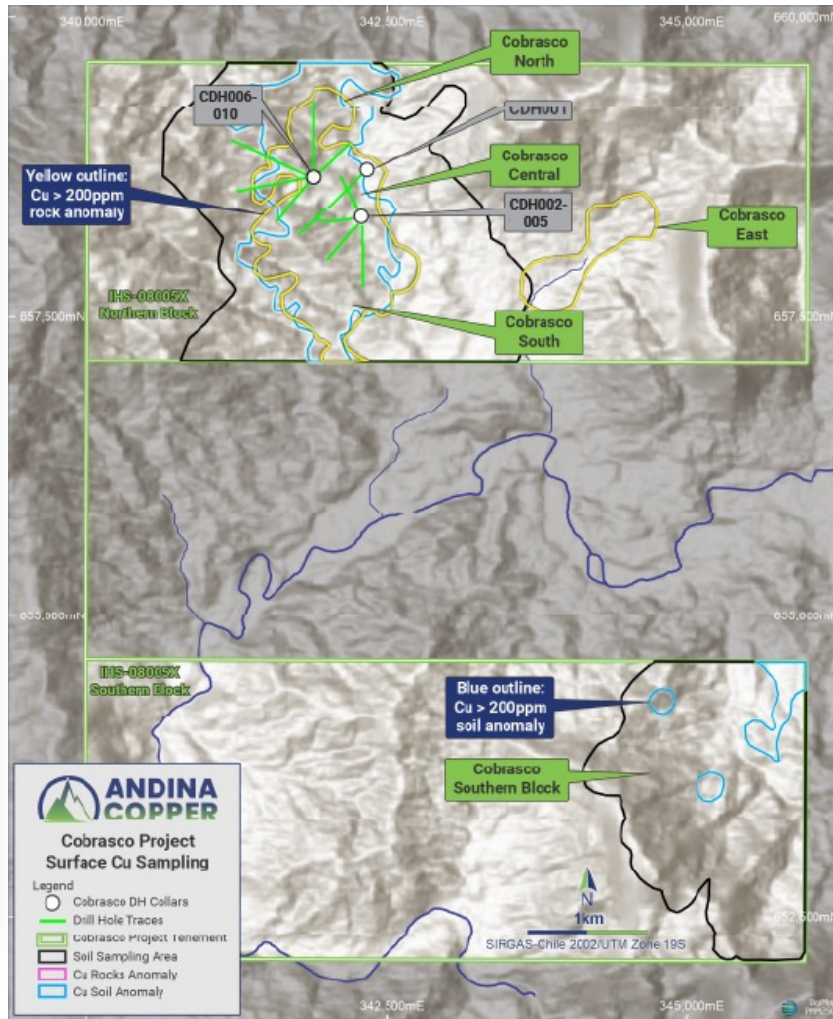
- **Underexplored segment** of the largest Cu producing belt, major companies active.
- **Copper mineralization begins at shallow depths** and is primarily bornite (68% copper), disseminated and as rims to chalcopyrite (33% copper).



COBRASCO

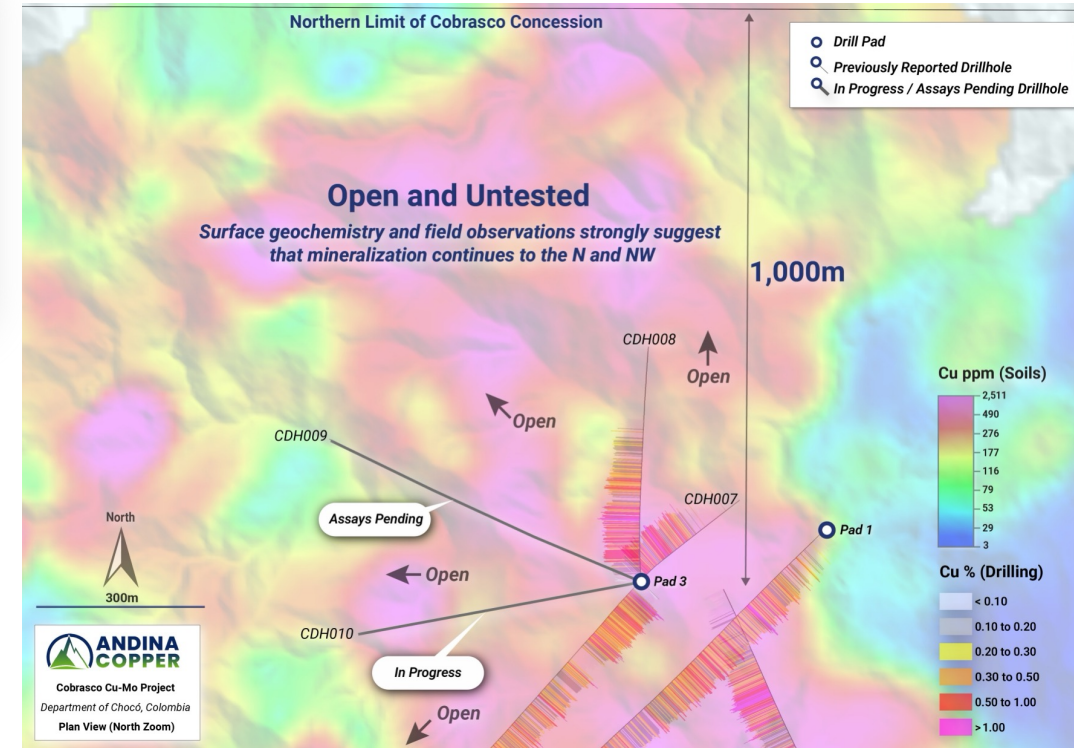
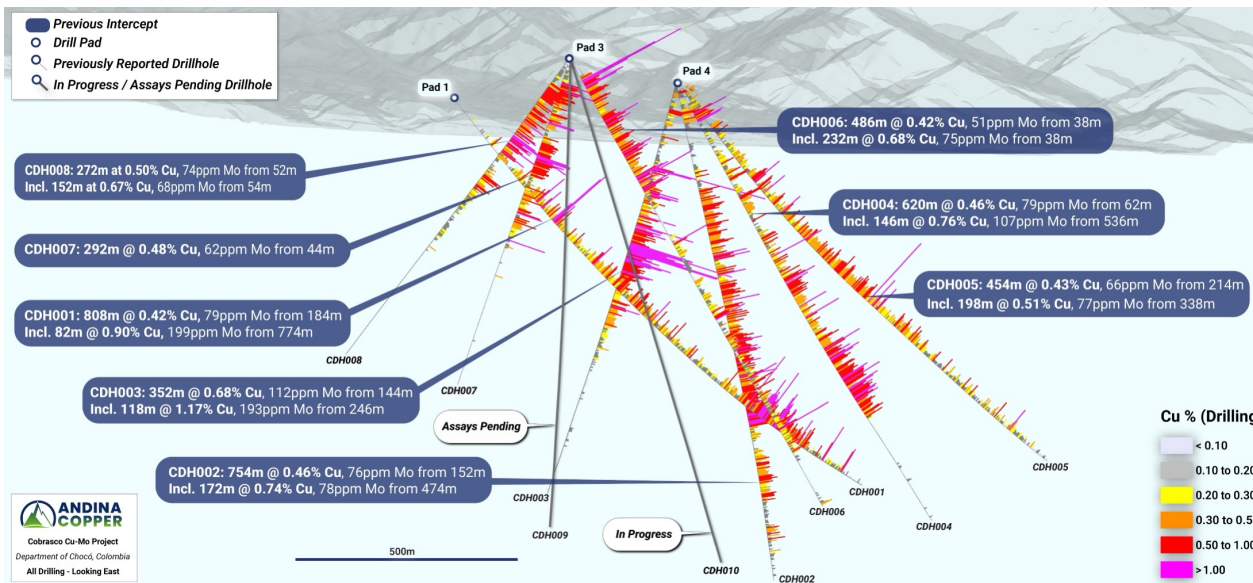
EARLY DAYS OF A NEW PORPHYRY COPPER DISTRICT

- Initial discovery at Cobrasco open in all directions.
- Adjacent to the **Comita (Rio Tinto)** porphyry copper discovery.
- Only 8 drill holes reported on a **+3km² Cu-Mo anomaly**.
- Currently drilling, assays pending
 - CDH009 – Completed to 950m
 - CDH010 – In progress
- Pathfinder geochemistry indicates the presence of multiple porphyry centres along and beyond key geological contacts.
- Potential for preserved, unexposed (“blind”) porphyry systems.



ONGOING DRILLING CONTINUES TO SIGNIFICANTLY EXPAND THE Cu–Mo SYSTEM

- **Massive-scale, shallow Cu–Mo porphyry system** with drilling delivering standout results including 352m @ 0.68% Cu, including 118m @ 1.17% Cu – a clearly defined high-grade core.
- **Vertically robust mineralized system** with strong continuity and open at depth.
- **Drilling across multiple platforms expanding a 2.7km mineralized corridor** – scale potential rapidly emerging (currently 1km x 550m defined from drilling).





PIUQUENES PORPHYRY Cu-Au

San Juan Province, ARGENTINA



PIUQUENES



PROVEN ELEPHANT COUNTRY

Proximate to:

- El Pachón (**Glencore**)
- Los Pelambres (**Antofagasta Minerals**)
- Los Azules (**McEwen Mining**)
- Altar (**Aldebaran Resources**)

PRIVATELY HELD UNTIL 2023

- Immediately adjacent to giant >3 Bt Altar deposit.
- Minimal historic exploration.

ACCESS AND PERMITTING

- Moderate altitude campsite at ~3,250 masl.
- Drill platforms at ~3,800 masl.
- Access via road from Barreal to El Pachón and Altar.
- Fully permitted for exploration drilling.

RAPID EXPLORATION AND EVALUATION

- ~11,000m diamond drilling completed since Jan 24.
- **Assays pending**

PIUQUENES

LARGE LAND PACKAGE WITH HIGH POTENTIAL FOR MULTIPLE DISCOVERIES

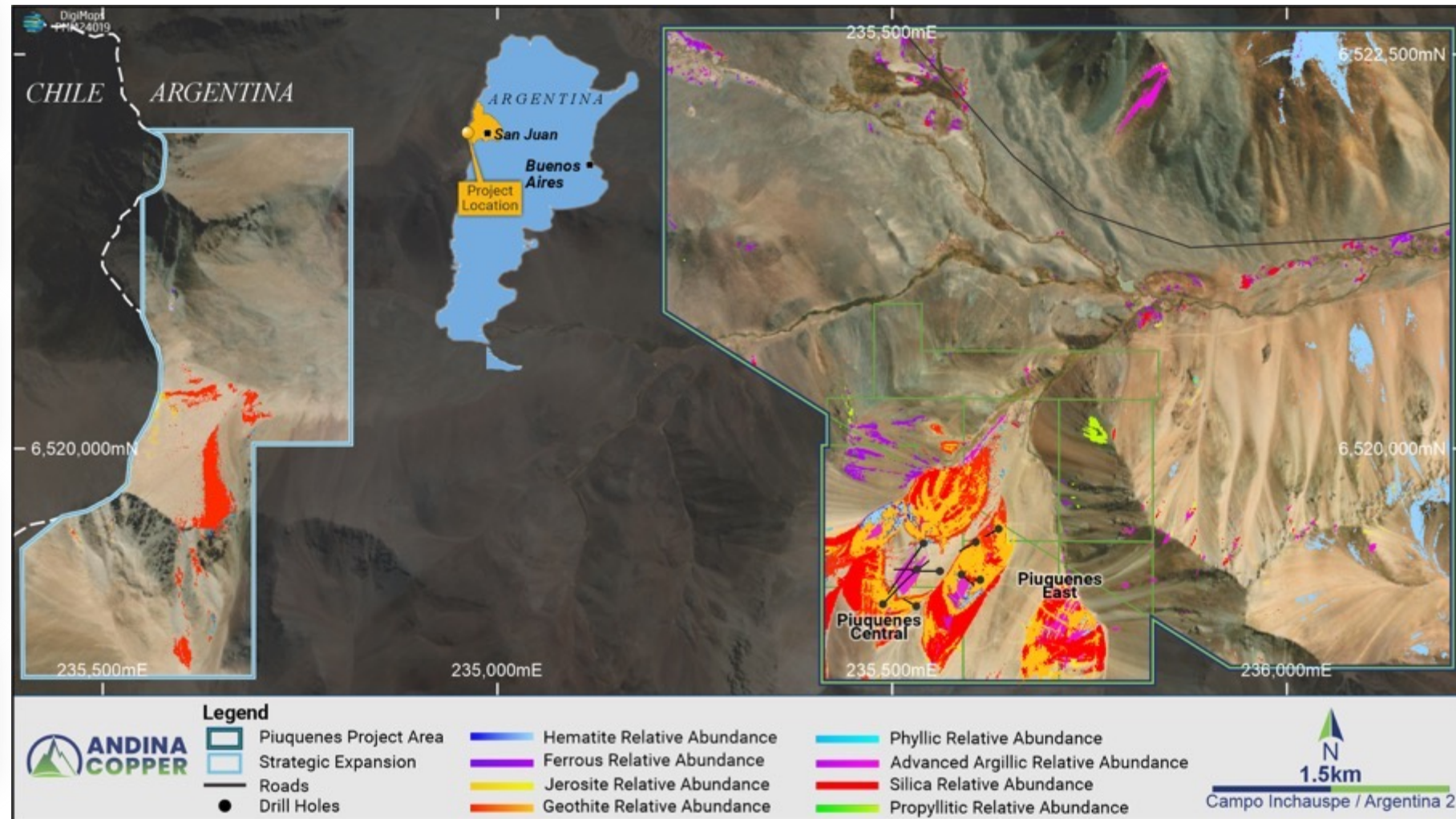
2,500ha land package across extensions of the Altar-Piuquenes Porphyry cluster.

Two porphyry Cu-Au systems already confirmed at Piuquenes Central and Piuquenes East.

Multiple **additional targets** currently being drill tested with 2 drill rigs.

Property wide geophysics (magnetics, MT and IP) completed this season.

High potential for the discovery of multiple porphyry Cu-Au deposits.



PIUQUENES

PIUQUENES CENTRAL

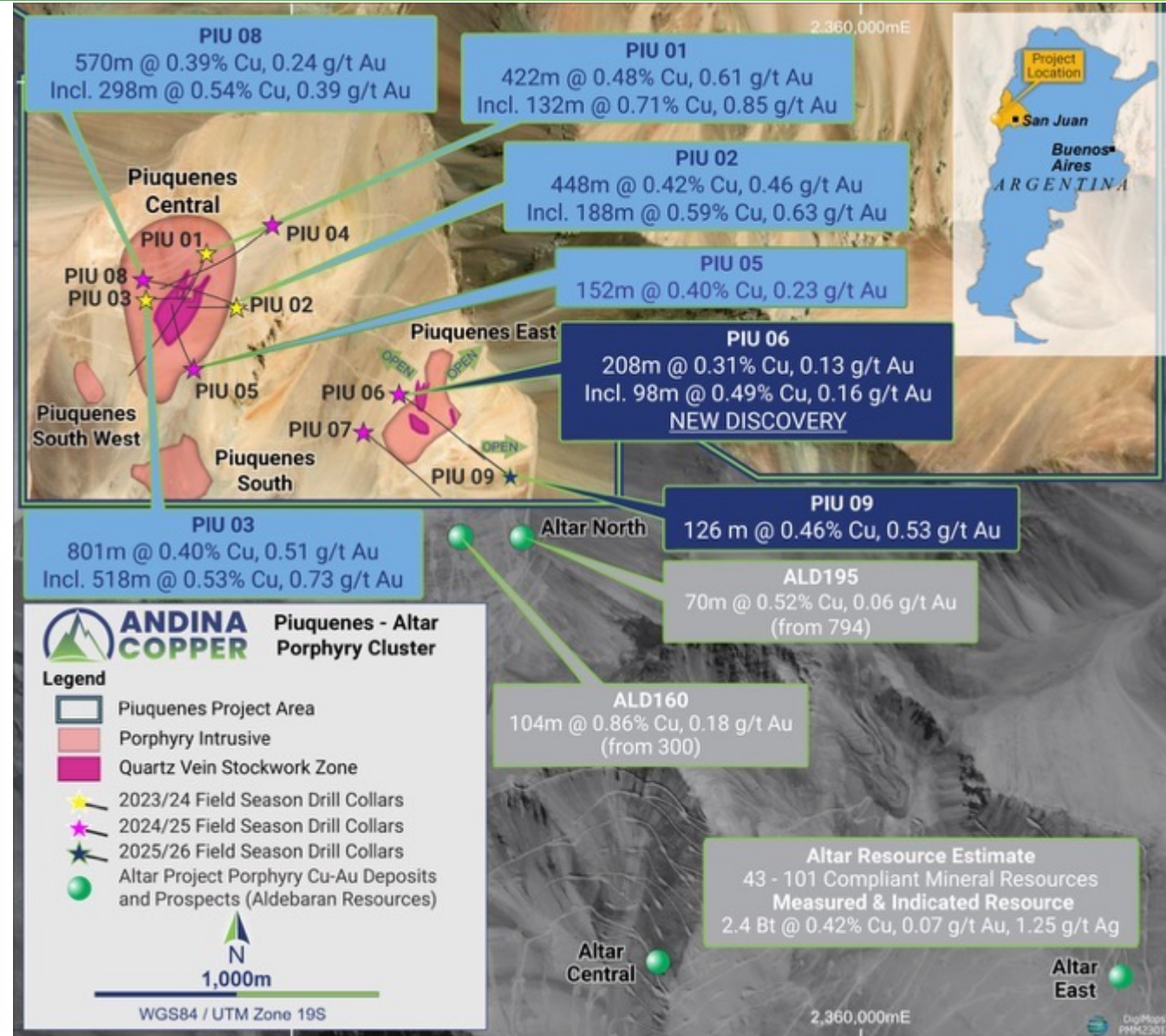
High grade Cu-Au intersections include:

- 413m @ 0.47% Cu, 0.52 g/t Au (from 167m)
- 158m @ 0.32% Cu, 0.60 g/t Au (from 3m)
- 558m @ 0.38% Cu, 0.42 g/t Au, 2.4 g/t Ag (from 362m),
incl. **180m @ 0.71% Cu, 0.61 g/t Au, 3.8 g/t Ag**
- 801m @ 0.40% Cu, 0.51 g/t Au, 2.87 g/t Ag (from 54m),
incl. **518m @ 0.53% Cu, 0.73 g/t Au, 3.45 g/t Ag**

PIUQUENES EAST

2nd PORPHYRY Cu-Au SYSTEM – NEW DISCOVERY

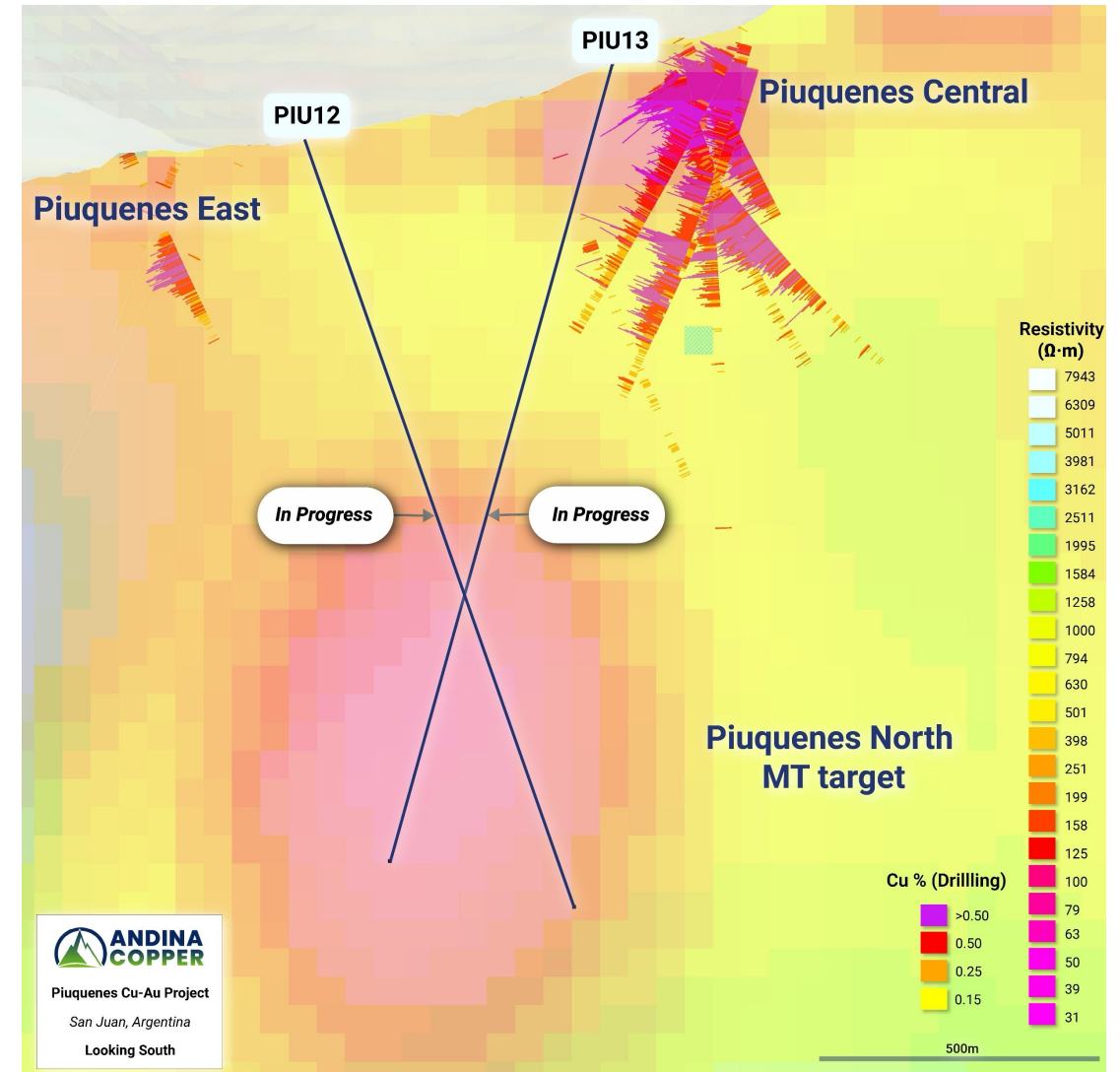
- PIU06: 208m @ 0.31% Cu, 0.13 g/t Au, 1.24 g/t Ag (from 292m), incl. **98m @ 0.49% Cu, 0.16 g/t Au, 1.26 g/t Ag**
- **PIU09: 126m @ 0.46% Cu, 0.53 g/t Au** (from 529m)



PIUQUENES

PIUQUENES NORTH

- MT survey (Jan 2026) identified a **large, deep conductive anomaly (MT target)** starting ~600m below surface and extending beneath East & Central.
- Integration with IP, drilling, alteration and structural data suggests East and Central mineralization may represent **upper-level expressions of a deeper source**.
- Scale and depth of the MT target are consistent with a **potential deep porphyry source**—typical of known Miocene porphyry systems.
- Data integration suggests known mineralization may be the **upper expression of a deeper system**.
- **Drillholes PIU12 and PIU13 to test (ASSAYS PENDING)**



Piuquenes North: MT target with completed drillholes, looking south.



MANTAU Cu-Au TARGET

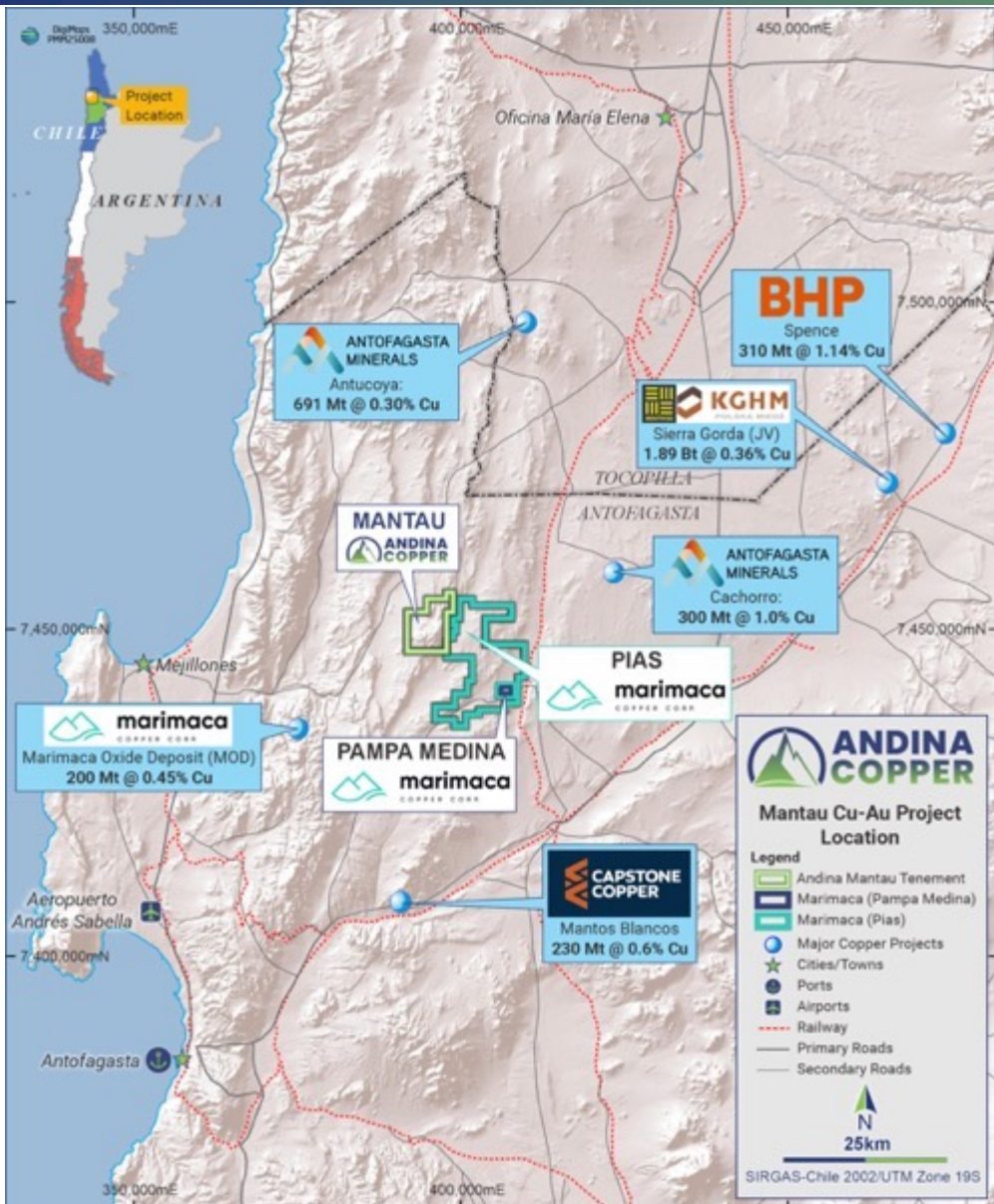
Antofagasta, CHILE



MANTAU

TIER 1 Cu JURISDICTION – Chilean Coastal Belt

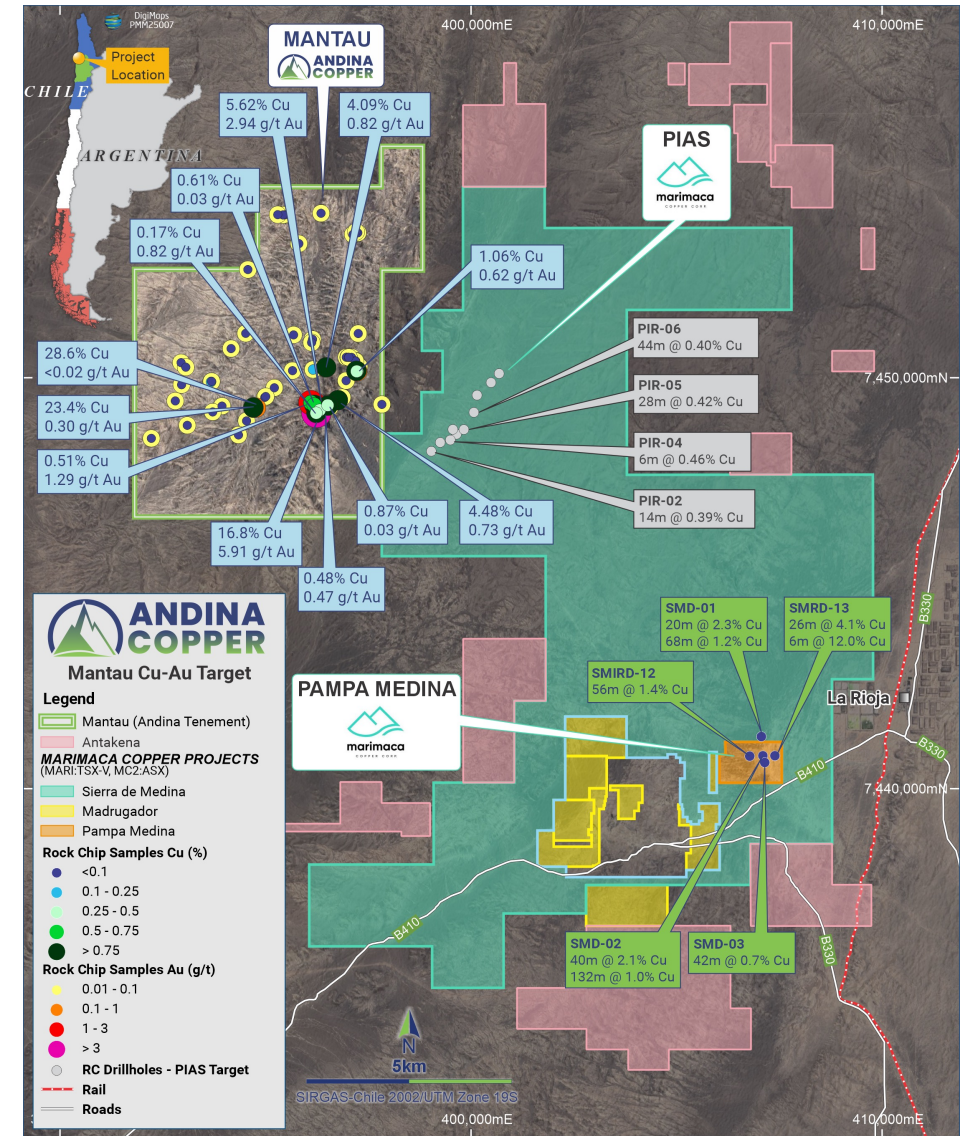
- Hosting **multiple world-class Cu systems** currently in full-scale production.
- **Exceptional infrastructure**, proximate to Antofagasta's major ports, power, and transport corridors.
- 4,500ha land holding proximate to the Pias and Pampa Medina discoveries (Marimaca Copper (TSXV:MARI))



MANTAU

Cu-Au MINERALIZATION CONFIRMED

- Rock chip results at Mantau include **28.6% Cu and 5.91 g/t Au**.
- Exploration at Mantau focused on **geochemical sampling and geophysical survey design** to define potential **porphyry and IOCG-style targets** to commence **May 2026**.



EXCEPTIONAL VALUE PROPOSITION

TIER 1 LOCATIONS

- San Juan Miocene Porphyry Belt (ARG)
- Chocó Porphyry Belt (COL)
- Antofagasta District (CHI)



NEAR-TERM NEWS FLOW

- Exploration Results Cobrasco
- Exploration Results Piuquenes
- Exploration Results Mantau (2H 2026)



MULTIPLE DISCOVERIES

- High Grade Porphyry Cu-Au (Piuquenes) and Cu-Mo (Cobrasco)
- 2nd Porphyry System Discovered - Piuquenes East (April 2025)
- Ongoing drilling across multiple targets, on multiple projects



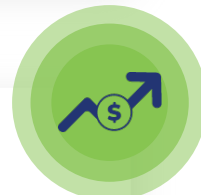
RIGHT PEOPLE

- Highly Experienced Team
- Track Record of Discovery, Project Acquisition and Monetization



COMPANY MAKING ASSETS

- Entry Level Valuation



COPPER

- Compelling Fundamentals
- Strong Corporate M&A Backdrop



APPENDICES



OUR APPROACH TO ESG

COBRASCO: EXPLORATION WITH PURPOSE

Integrating responsible exploration, environmental stewardship and community engagement in Chocó, Colombia



COMMUNITY ENGAGEMENT

- Roundtable engagement representatives from local authorities
- Youth engagement session for university students
- Ongoing community agreement and collaboration
- Local employment and economic participation



ENVIRONMENTAL PROTECTION

- Water purification and monitoring systems in place
- Resource recovery (waste valorization) initiatives



RESPONSIBLE EXPLORATION

- Baseline studies across fauna, flora and water systems
- Low-impact exploration and progressive site management



OUR APPROACH TO ESG

RECENT INICIATIVES



- Sponsored inaugural ERW (Enhanced Rock Weathering) workshop in Chocó, bringing together scientists, communities, and authorities to advance environmental and social initiatives



- Waste-to-fertilizer system supporting circular economy principles
- Water purification system installed for community and site use



- Water purification system installed for community and site use

ACQUISITION TERMS

PIUQUENES

OPTION PAYMENTS (US\$1.25M TOTAL)

- US\$50k upon signing (paid);
- US\$200k upon drilling (paid);
- US\$250k 6 months following commencement of drilling (paid);
- US\$250k on 1st anniversary (paid);
- US\$250k on 2nd anniversary (paid);
- US\$250k on 3rd anniversary.

OPTION TERMS

- Four (4) year option.
- Exercisable prior to 30 November 2027 through payment of US\$14.75m and granting a 1.25% NSR.
- Up to US\$2.5m USD can be scrip settled, at Andina's election.

WORK COMMITMENTS

- 6,000m drilling (completed);
- US\$6m additional project expenditure

Andina Copper has the right to earn an 80% interest in Piuquenes through a combination of option payments, project expenditure and asset payments.

CONTACT US

Joseph van den Elsen

President & CEO | joseph@andinacopper.com

Jordan Webster

VP – Technical Communications | jordan@andinacopper.com

